

ORDER A
NEW HOME
ORDER
HAPPINESS

Pelican Court

 Jahi



Contents

■ Overview

- Location
- Land mass
- Landmarks
- Units of Building
- Design Type
- Essential Amenities

■ House Type

■ Floor Plan

- Detailed Dimensions

■ Construction

■ Project Completed

■ Features

- Amenities
- House Type
- Optional Additional Features
- Estimated Driving Distance



Overview

Pelican Court

Jahi

The Pelican Court can be found in the tranquil Surroundings of Jahi District in Abuja.

The Estate on delivery will comprise 22 units of 4 Bedroom Terrace Duplex and eight units of 3-Bedroom apartments.

This Development is catered to offer you and your loved ones a sense of Community and utmost Security with proximity to Social and Lifestyle Amenities.

Yankari(4-Bedroom Terraces) Swahili and contemporary architecture inspire this 4- Bedroom Terrace Duplex; its royal and timeless designs are carefully crafted with breathtaking panoramic views from each living space.



House Type



Yankari

Four Bedroom Terrace with Servant Quarter

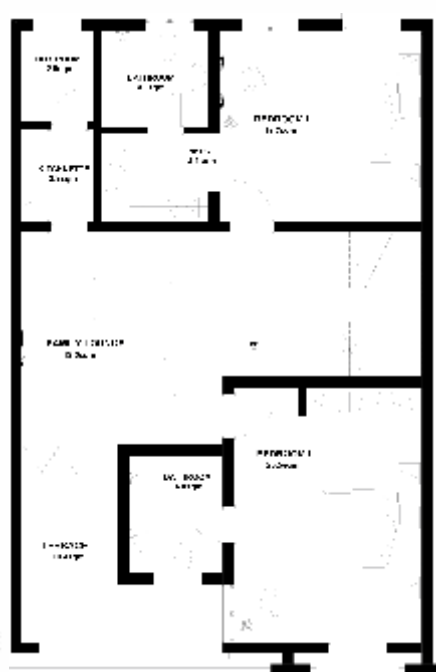
Floor Plan

Yankari

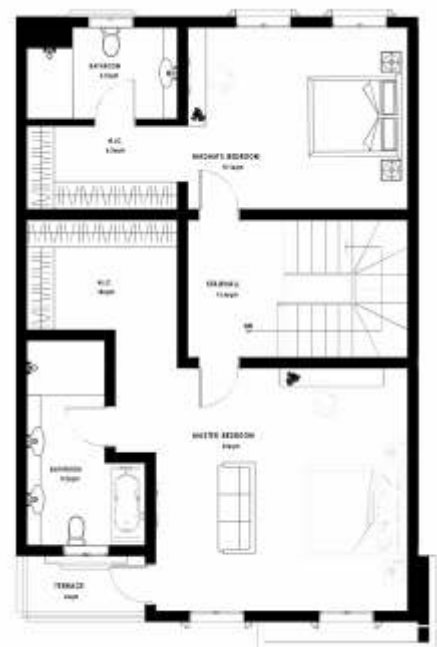
GROUND FLOOR



FIRST FLOOR



SECOND FLOOR



Floor plan dimensions

Yankari

Four Bedroom Terrace
with Servant Quarters

GROUND FLOOR

MAID'S ROOM	6.9sqm
BATHROOM	3.3sqm
TERRACE	6.5sqm
KITCHEN	16.7sqm
STORE	3.9sqm
DINING ROOM	10.6sqm
LIVING ROOM	29sqm
FOYER	5.2sqm
VISITOR'S TOILET	3.4sqm
ENTRANCE	5.6sqm

FIRST FLOOR

BEDROOM I	16.7sqm
BATHROOM	4.5sqm
WALK IN CLOSET	4.1sqm
BEDROOM II	20.5sqm
BATHROOM	4.8sqm
TERRACE	10.4sqm
BOX ROOM	2.9sqm
KITCHENETTE	2.9sqm
FAMILY LOUNGE	18.5sqm

SECOND FLOOR

MADAM'S BEDROOM	19.1sqm
BATHROOM	6.6sqm
WALK IN CLOSET	6.3sqm
MASTER BEDROOM	30.8sqm
BATHROOM	8.2sqm
WALK IN CLOSET	10sqm
TERRACE	4sqm
STAIRHALL	14.4sqm

Construction



25%
Completed



Features

- Ample Playground • 24 Hours CCTV Surveillance • Smart Street Light Adequate Car Park
- Club House • Well Landscaped Surroundings • Gated community

Optional Additional Features Include:

- Home Automation fittings, Lighting Sensors and Central Control System
- Bespoke Options of Finishes; Custom Selection from our available Palette.
- Interior Decoration Services with our in-House Experts.

Estimated Driving Distance



10 minutes proximity to major roads in Abuja.



25 minutes to the airport.



10 minutes to the central business district.



10 - 15 minutes to fine dining restaurants and places of worship.

A photograph of a modern, multi-story apartment building with a light-colored facade and dark window frames. The building features decorative geometric patterns on the upper levels. A large, dark teal diagonal shape is overlaid on the left side of the image, partially obscuring the building. The sky is a clear, bright blue.

Disclaimer

The Developer has made every effort to ensure that all information contained in this brochure are as accurate.

However, the final outcome of houses may be subjected to some changes as deemed fit by the Developer. We would ensure to keep these changes as minimal as possible but they would be effected if unavoidable.

📍 No 204, Shashilga Court before Alibert, Abuja, Nigeria.

© 0702 500 5456, 0809 607 4999

✉ info@modernshelternng

www.modernshelternng.com